

VOLVO PENTA

AQUAMATIC D32/270



The Aquamatic D32/270 provides a particularly advantageous combination of low weight, high output and good running economy. The six-cylinder engine with an output of 106 h.p. satisfies output requirements for both relatively large planing boats and also fast planing boats.

The robust and technically advanced fresh-water cooled engine is characterized by exceptionally quiet and vibration-free operation. In relation to its output, the Aquamatic D32/270 has compact dimensions, and this makes it easy to install even in confined spaces. The small dimensions and low weight are also an advantage in the case of twin installations. As a result of scientific calculations and practical tests, the ratio of the drive has been adapted so that it can utilize maximum engine torque. This ensures maximum tractive effort over the entire engine speed range.

Model 270 outboard drive

The engine and drive are fitted together through one single hole in the transom through the medium of a mounting collar in which all the connections are built in.

The 270 outboard drive unit is the most powerfully dimensioned outboard drive of its type on the market with an outstanding operational reliability and durability second to none. Behind its design and its corrosion-resistant and rugged construction lie the accumulated experience and considerable expertise of Volvo Penta, who were pioneers in this particular field. All gears, drive shafts and bearings on the 270 drive unit have been robustly constructed to cope with maximum loads for a long period. Thorough, long-endurance tests have confirmed without a shadow of a doubt that the 270 unit is unequalled. The propeller gear is of a new bevel type

which ensures that the drive unit runs very quietly and makes continuous operation possible in either direction of propeller rotation. Changeover from left-hand to right-hand rotation is done by a simple shift change. The 270 drive unit is particularly easy to manoeuvre thanks to the smooth operation of the patented cone clutch of type "Silent Shift", as well as to the properly balanced controls which make the unit very easy to steer. The patented construction of the retaining pawl provides full security during operation "Forward" against any unexpected tipping up of the drive caused, for example, when running in shallow waters. In emergency situations, rapid manoeuvring in reverse can also be carried out up to speeds of about 15–20 knots without the drive "floating up". The electrically operated mechanical lift unit, which is fully reliable in use, is fully enclosed and is operated within easy distance of the driving seat.

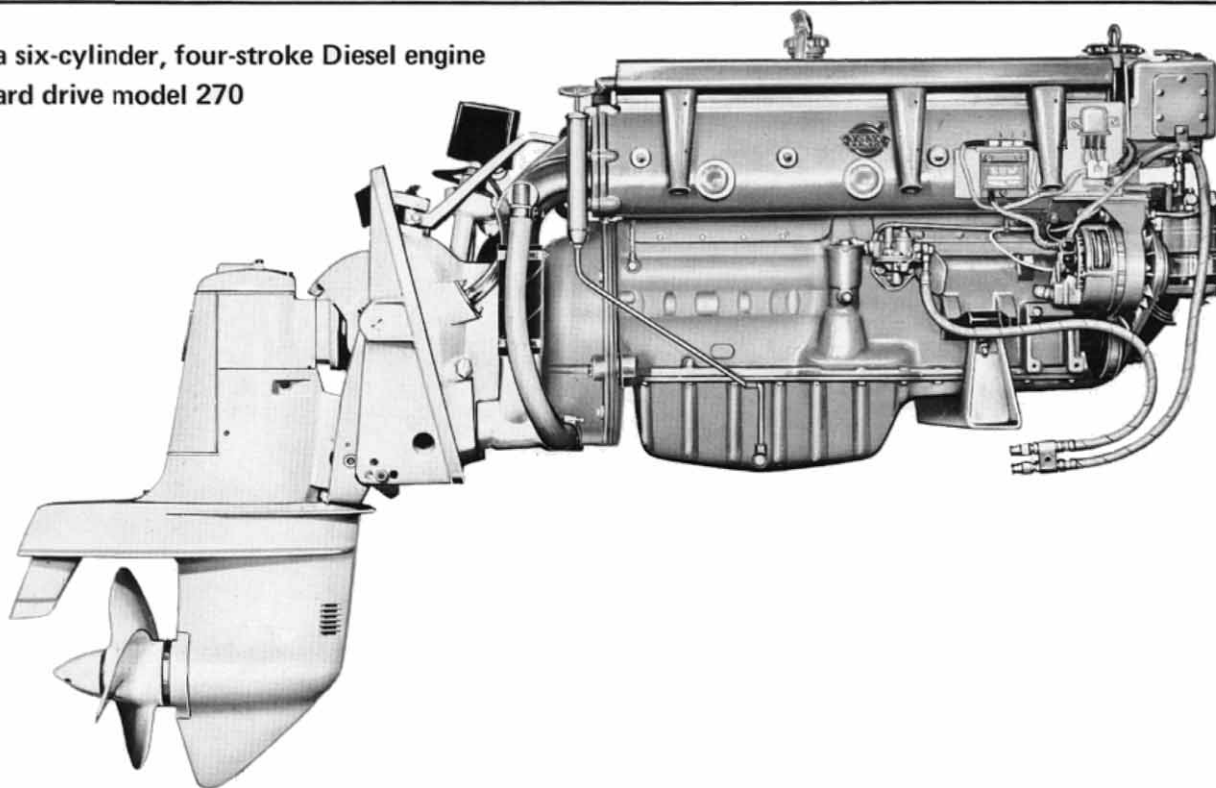
DATA

Type of operation	Four-stroke Diesel engine with swirl chambers
Type designation	AQ D32A/270D
Max. output, pleasure boats (SAE)	106 h.p. x)
Max. operating speed, r.p.m.	4000
Numbers of cylinders	6 in line
Capacity, litres (cu.in.)	3.17 (193)
Bore/stroke, mm (in)	90/83 (3.54/3.27)
Valves	Overhead
Outboard drive, type designation/ratio	270D/2.15:1
Total weight, kg (lb.), approx	395 (871)

x) Max. output only permitted for short periods of time
Cruising speed is 200 r.p.m. lower than maximum engine speed

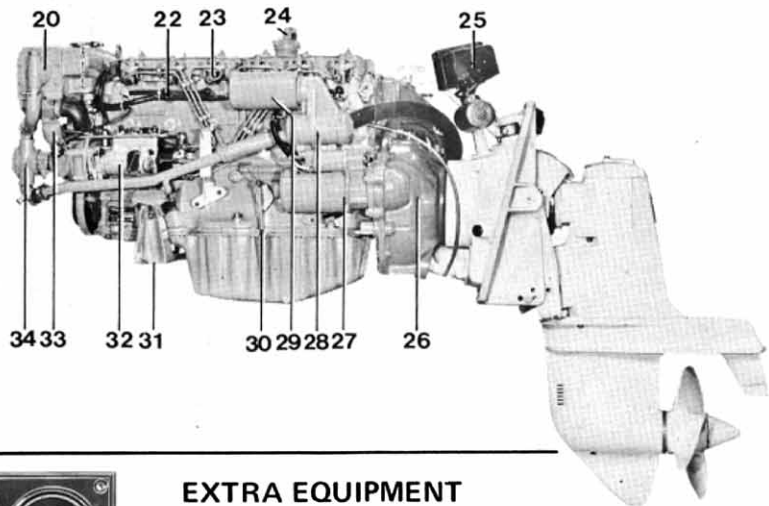
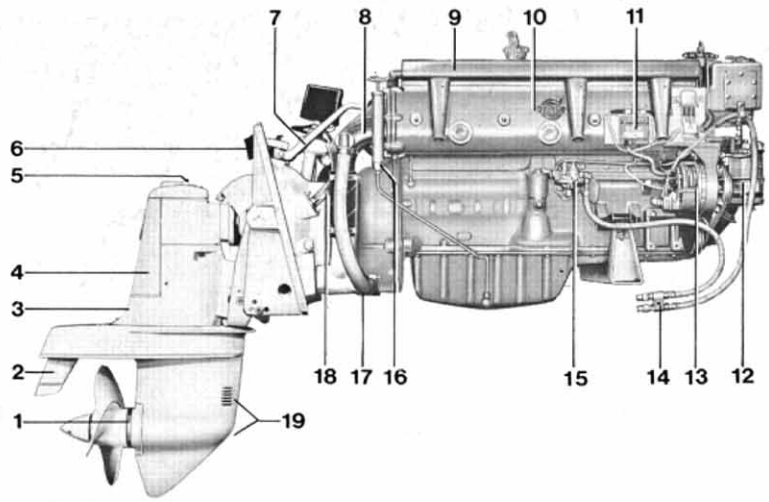
Volvo Penta six-cylinder, four-stroke Diesel engine with outboard drive model 270

106 hp



AQUAMATIC D32A/270D

1. Anti-corrosion zinc ring
2. Exhaust outlet and trim tab
3. Oil filler
4. Casing over control units. The control units can easily be adapted for right-hand rotation
5. Oil dipstick
6. Rubber damper for drive tip-up
7. Steering rod connected to steering system
8. Cast-iron exhaust elbow
9. Intake silencer
10. Exhaust manifold with fully water-cooled ports
11. Connector block for all the electrical connections to the instrumentation
12. Fuel filter with water trap
13. Alternator 12 V, 35 A
14. Flexible fuel line with connector
15. Fuel feed pump
16. Sump emptying pump
17. Outlet for surplus cooling water
18. Cooling water line
19. Cooling water intake
20. Heat exchanger
22. Glow plug
23. Injector
24. Closed circuit crankcase ventilation
25. Electro-mechanical lift
26. Fully enclosed flywheel
27. Starter motor
28. Oil cooler
29. Spin-on full-flow oil filter
30. Oil dipstick
31. Front engine mounting with rubber block
32. Fuel injection pump
33. Sender for revolution counter
34. Sea-water pump

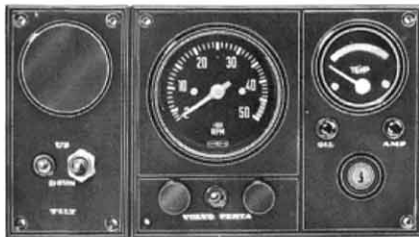


STANDARD EQUIPMENT

Standard equipment includes: Instrument panel of entirely new design which can be supplemented with small panels for extra instrumentation.

Also included as standard are: Electric rev. counter, temp. gauge, warning lamps for battery charging and oil pressure, switches and key switch.

All electric cables are routed together in a 7 m (23 ft.) long cable harness with plug in.



EXTRA EQUIPMENT

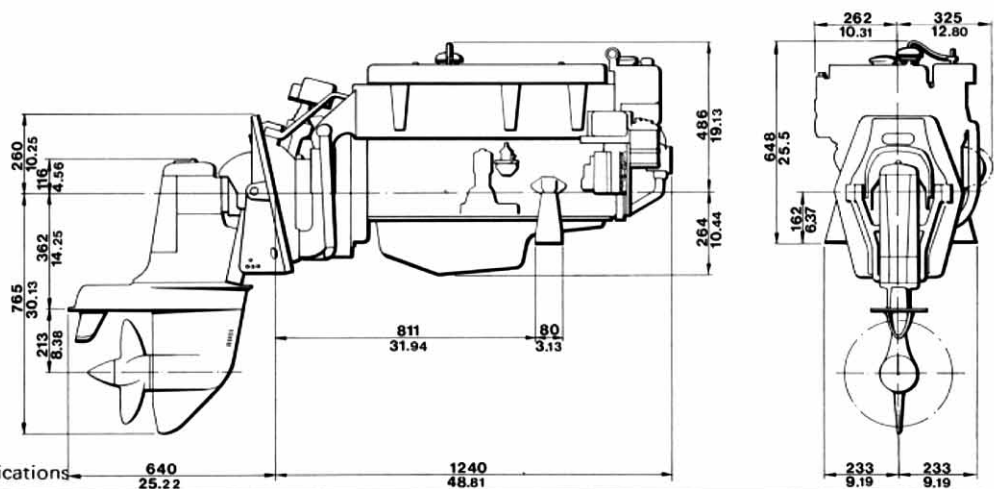
Single lever control system for throttle and gear-shifting. Available for single and twin installation and also for port, starboard or top fitting.

Control cables for the above-mentioned control are available in fixed lengths from 7' up to 31'.

Complete "push-pull" steering system with a 16" wheel and various cable lengths from 10' up to 28' including connecting hardware to outboard drive, single or twin installation. Propellers, two or three blades.

Spare parts kit.

DIMENSION DRAWING



We reserve the right to carry out modifications



AB VOLVO PENTA

Box 392, 401 26 Göteborg 1, Sweden

Telephone 23 54 60

Cables: Penta

Telex 207 55